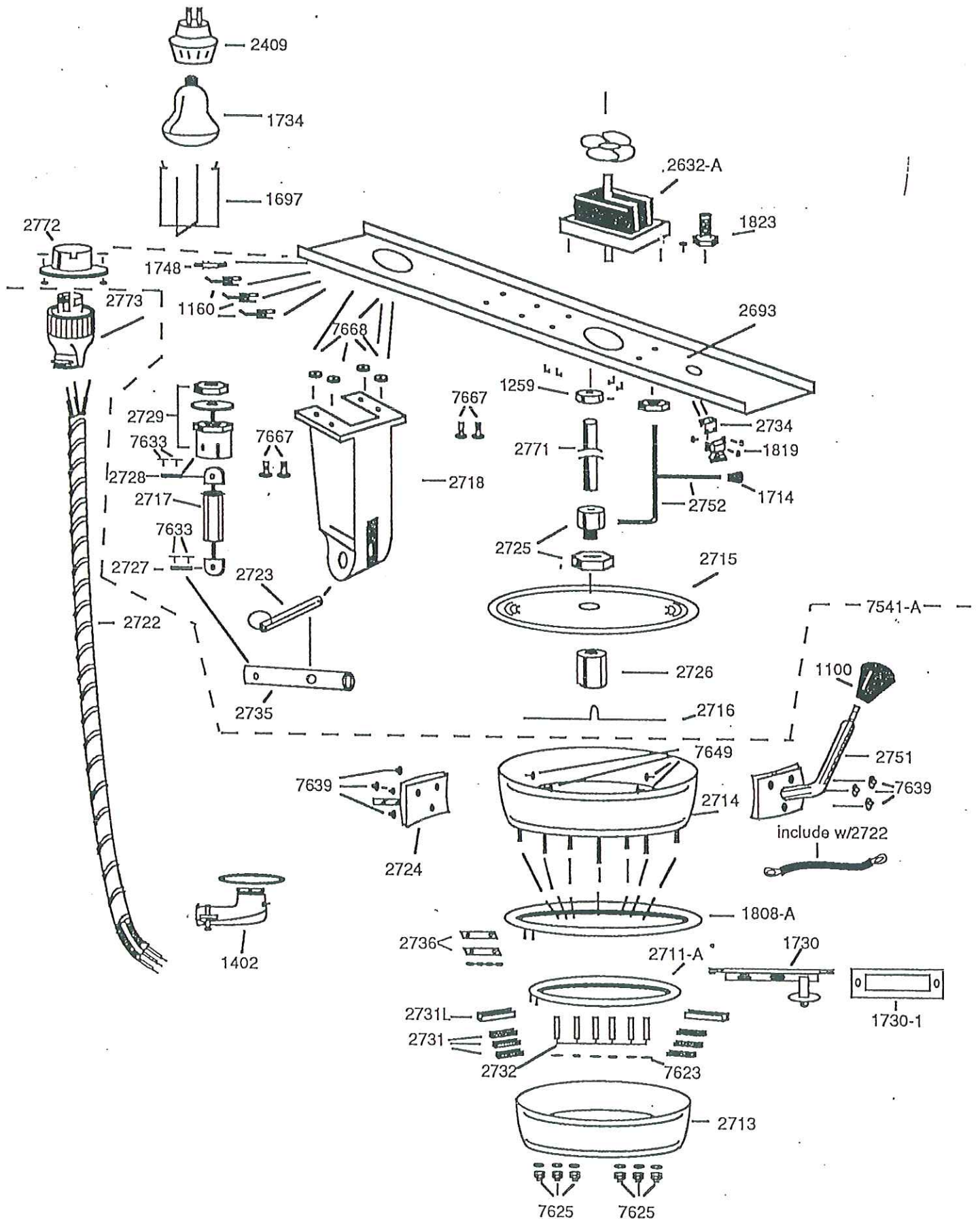


PROFITEER KETTLE

Beginning Serial No. 88063004

PT14-1B

5/92



PROFITEER KETTLE

Beginning Serial No. 88063004

PT14-1B

5/92

1100	DUMP LEVER KNOB	2724	KETTLE RETURN BRACKET
1160	SWITCH	2725	KETTLE COVER CENTER & NUT
1259	SHAFT COLLAR - 1/2"	2726	STIRRER SHAFT WEIGHT
1402	90° CONNECTOR	2727	LOWER RETURN SPRING PIN
1697	LAMP GUARD	2728	UPPER RETURN SPRING PIN
1714	KNOB & SCREW	2729	KETTLE ADJUSTING STUD
1730	THERMOSTAT	2731	SHORT ELEMENT CLAMP
1730-1	THERMOSTAT RETAINER	2731-L	LONG ELEMENT CLAMP
1734	HEAT LAMP	2732	KETTLE SPACER
1748	PILOT LIGHT	2734	CATCH BRACKET
1808-A	1250 WATT, 120 VOLT ELEMENT	2735	PIVOT BAR
1819	COVER LIFT ARM CATCH	2736	NICKEL STRAPS-SET OF TWO
1823	COVER LIFT ROD GUIDE	2751	DUMP HANDLE
2409	SNAP-IN PORCELAIN SOCKET	2752	COVER LIFT ROD ASSEMBLY
2632-A	MOTOR - 120 VOLT	2771	STIRRER SHAFT
2693	TOP PLATE STIFFENER	2772	KETTLE RECEPTACLE
2711-A	300 WATT, 120 VOLT ELEMENT	2773	KETTLE PLUG
2713	RETAINER	7541-A	KETTLE ASSEMBLY-14 OZ.
2714	KETTLE	7623	10-32 HEX NUT
2715	KETTLE COVER	7625	10-32 CAP NUT
2716	STIRRER BLADE	7633	3/32 X 1 COTTER PIN
2717	RETURN SPRING	7639	1/4-20 CAP NUT
2718	KETTLE SUPPORT	7649	1/4-20 X 1/2 HEX HEAD
2722	KETTLE WIRE SET (INCLUDES JUMPER WIRE)	7667	12-24 X 1/2 FILLISTER HEAD
2723	KETTLE HINGE PIN	7668	12-24 HEX NUT

*C. CRETORS AND COMPANY**3243 NORTH CALIFORNIA AVENUE**CHICAGO, ILLINOIS 60618**PHONE(312)588-1690, (800)228-1885, FAX(312)588-2171*